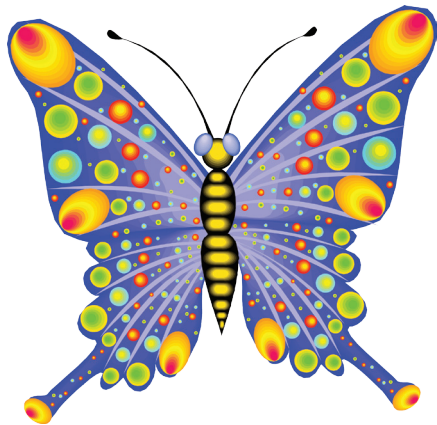


# 2013 KEA Emerging Leadership Program

The purpose of KEA's Emerging Leadership program is to identify, train and equip a racially and culturally diverse group of potential leaders to carry out the mission of KEA.



Kentucky Education Association is the preeminent voice for quality public education.

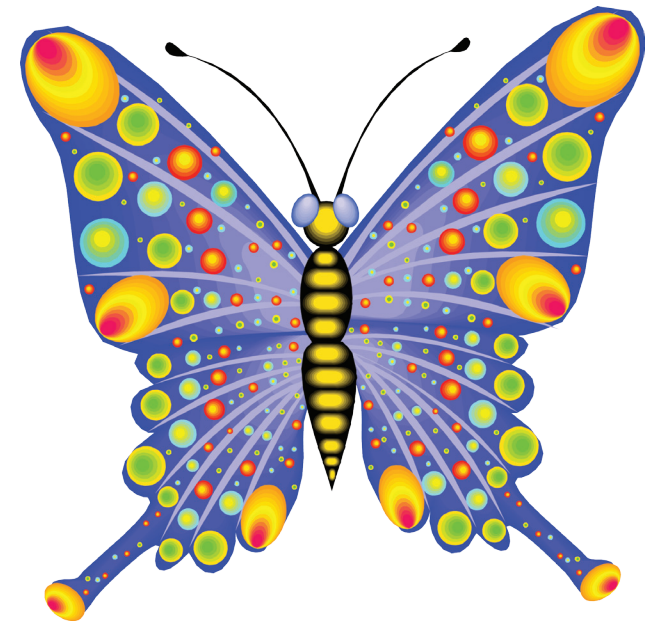
We unite, organize and empower our members to advocate for themselves and to ensure a quality public education for every Kentucky student.



Kentucky Education Association  
401 Capital Avenue Frankfort KY 40601

Phone: (800) 231-4532  
(502) 875-2889  
Fax: (502) 227-9002  
[www.kea.org](http://www.kea.org)

# KEA Emerging Leadership Program



**June 17-18, 2013**  
**Embassy Suites Hotel**  
**Lexington, Kentucky**

# KEA Emerging Leadership Training

## Who?

Are you fairly new to KEA?

Do you hold no elected or appointed leadership position?

Do you want to become more engaged in KEA activities?

You could be an Emerging Leader!

## When?

Emerging Leadership training will take place during KEA's summer Leadership Conference to be held June 17-18, 2013 at the Embassy Suites Hotel in Lexington.



## What?

- ◇ Leadership Styles—What is a Leader?
- ◇ Membership
- ◇ Communication
- ◇ Orientation to KEA
- ◇ Basic Legal Rights
- ◇ Legislative and Political Action
- ◇ Commitment to Action

## How?

Up to 30 newer KEA members will be selected to participate.

You may nominate yourself, or a KEA leader may nominate you, or your KEA UniServ Director may nominate you.

Tear off, complete the form on the next panel and return it **by May 3, 2013**, to Michelle Duke, KEA, 401 Capital Ave., Frankfort KY 40601.

*Participants selected will be notified by May 10, 2013.*

# Registration form

2013 KEA  
Emerging Leadership Training

Name: \_\_\_\_\_

Address: \_\_\_\_\_  
\_\_\_\_\_

Preferred Phone Number: \_\_\_\_\_

Preferred E-Mail Address: \_\_\_\_\_

Local Association: \_\_\_\_\_

Work Location: \_\_\_\_\_

Position: \_\_\_\_\_

Nominated by: \_\_\_\_\_

Position: \_\_\_\_\_

Signature of Local President: \_\_\_\_\_  
\_\_\_\_\_

***Return completed form by May 3, 2013, to Michelle Duke at KEA, 401 Capital Ave., Frankfort, KY 40601***

